

Sabroe SAB screw compressor units

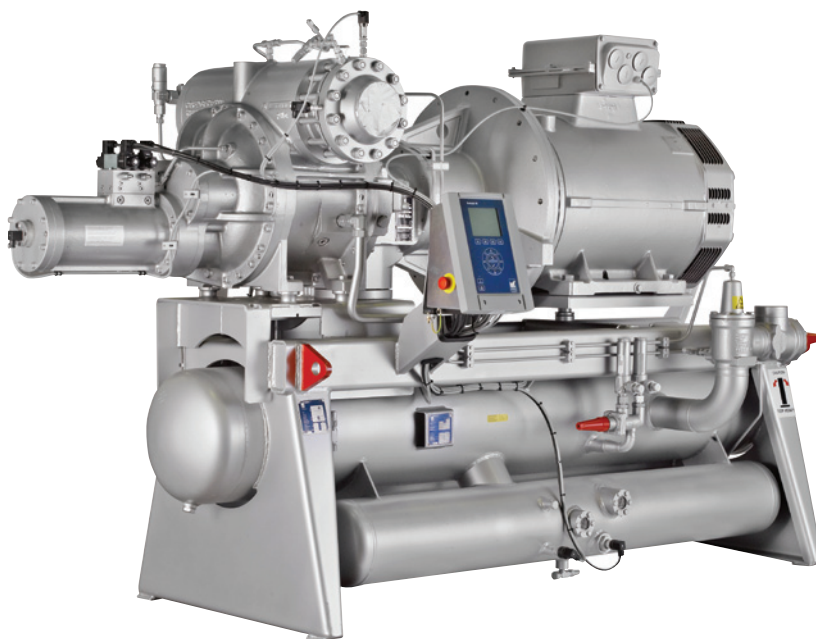
Large single-stage compressors with swept volumes of 850–9000 m³/h

The bigger models of Sabroe SAB screw compressors are specifically engineered to deal with larger-scale industrial refrigeration installations in which requirements prioritise exceptional reliability, high performance and low operating costs. All the components are designed and configured to ensure low maintenance costs as a result of good accessibility and ease of service.

Like their smaller counterparts, these large-capacity compressor units can be used with all common refrigerants and process gases.

Range

Thirteen different models are available to provide swept volumes of 838–9053 m³/h at 3000 rpm.



SAB 193 screw compressor unit with Unisab III systems controller

Advantages

Benefits

Variable-speed drive and stepless capacity control ensures that capacity is always adjusted to suit requirements

Maximum part-load efficiency and lowest possible operating costs

SAB screw compressor units are all equipped with a Unisab III systems controller

More efficient operating profile, less downtime and longer service life

Cold Start™ valve lubricates the compressor, with no oil pump needed

Lower operating costs and less maintenance

SuperFilter II™ oil filter captures 99% of all particles larger than 5 microns

Longer bearing life, providing maximum reliability and savings on both maintenance and replacement

Space-saving design with small footprint

Significant reductions in space requirements

Compact oil separator

Highly efficient oil carry-over as a result of two-stage separation

Optional equipment

- Variable-speed drive
- Thermosyphon and water-cooled oil coolers, with 3-way oil temperature control valve
- Liquid injection oil cooling (EZ Cool™)
- Dual external oil filters (SuperFilter II™ type)
- Complete economiser systems
- Demand oil pump – controlled by Unisab III systems controller
- Sensors and transmitters for control by external PLC systems

Model	Swept volume at 3000 rpm m ³ /h	Capacities in kW						Dimensions in mm L x W x H	Weight excluding motor/oil kg	Sound pressure level dB(A)
		R717		R404A		With economiser				
		High stage -10/+35°C	Booster -40/-10°C	High stage		R717 -40/+35°C	R404A			
				-10/35°C	0/+40°C					
SAB 193 S	838	541	164	524	779	155	213	3145 x 1470 x 1562	2370	84
SAB 193 L	1118	723	220	709	1041	207	289	3232 x 1470 x 1562	2470	84
SAB 233 S	1475	974	292	922	1404	271	379	3388 x 1497 x 2317	3350	86
SAB 233 L	1856	1220	366	1199	1760	340	492	3388 x 1497 x 2342	3450	86
SAB 233 E	2258	1520	456	1472	2191	424	606	4118 x 1775 x 2534	4550	86
SAB 283 S	2640	1767	530	1694	2544	500	707	4121 x 1858 x 2590	5700	88
SAB 283 L	3326	2215	664	2079	3190	627	874	4121 x 1858 x 2647	5850	88
SAB 283 E	3998	2667	800	2524	N/A	755	1064	4406 x 2075 x 2813	7650	88
SAB 355 S	4134	2785	836	2649	4033	786	1116	4350 x 2400 x 3400	8000	89
SAB 283 X	4516	3033	910	2832	N/A	844	1185	4582 x 2075 x 2815	8950	88
SAB 355 L	5638	3771	1131	3418	5459	1065	1457	4350 x 2400 x 3400	8250	89
SAB 355 E	7175	4793	1438	4300	6940	1354	1838	5600 x 2450 x 3700	11100	89
SAB 355 X	9053	N/A	1796	N/A	N/A	1681	2139	5600 x 2450 x 3700	11300	89

Nominal capacities are based on 3000 rpm.

New oil separator frame design available for SAB 193.

Sound pressure levels in free field, over reflecting plane and one metre distance from the unit.



PUBL-5643 2012.11 - 1

All information is subject to change without notice.

Johnson Controls Denmark ApS · Sabroe Factory
 Christian X's Vej 201 · 8270 Højbjerg · Denmark
 Phone +45 87 36 70 00 · Fax +45 87 36 70 05
www.sabroe.com

